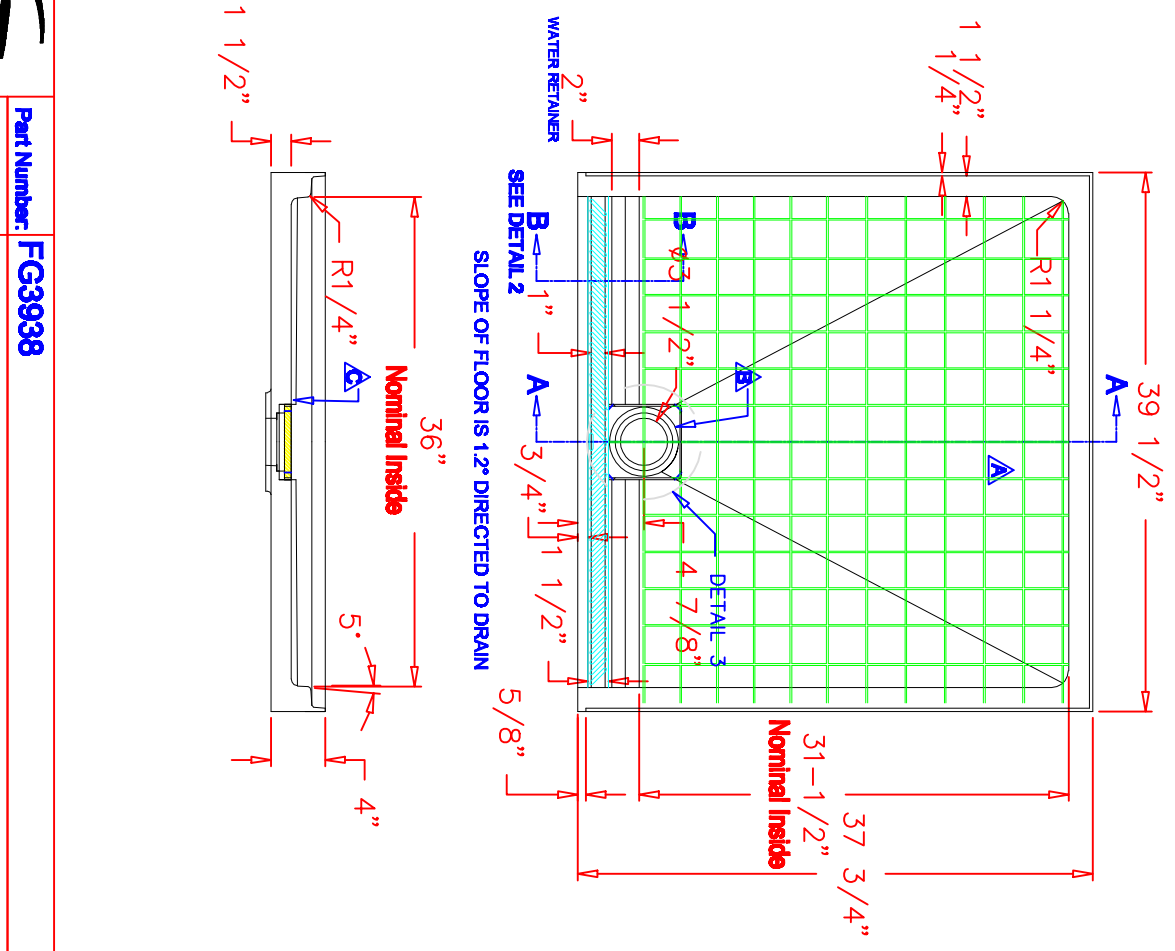
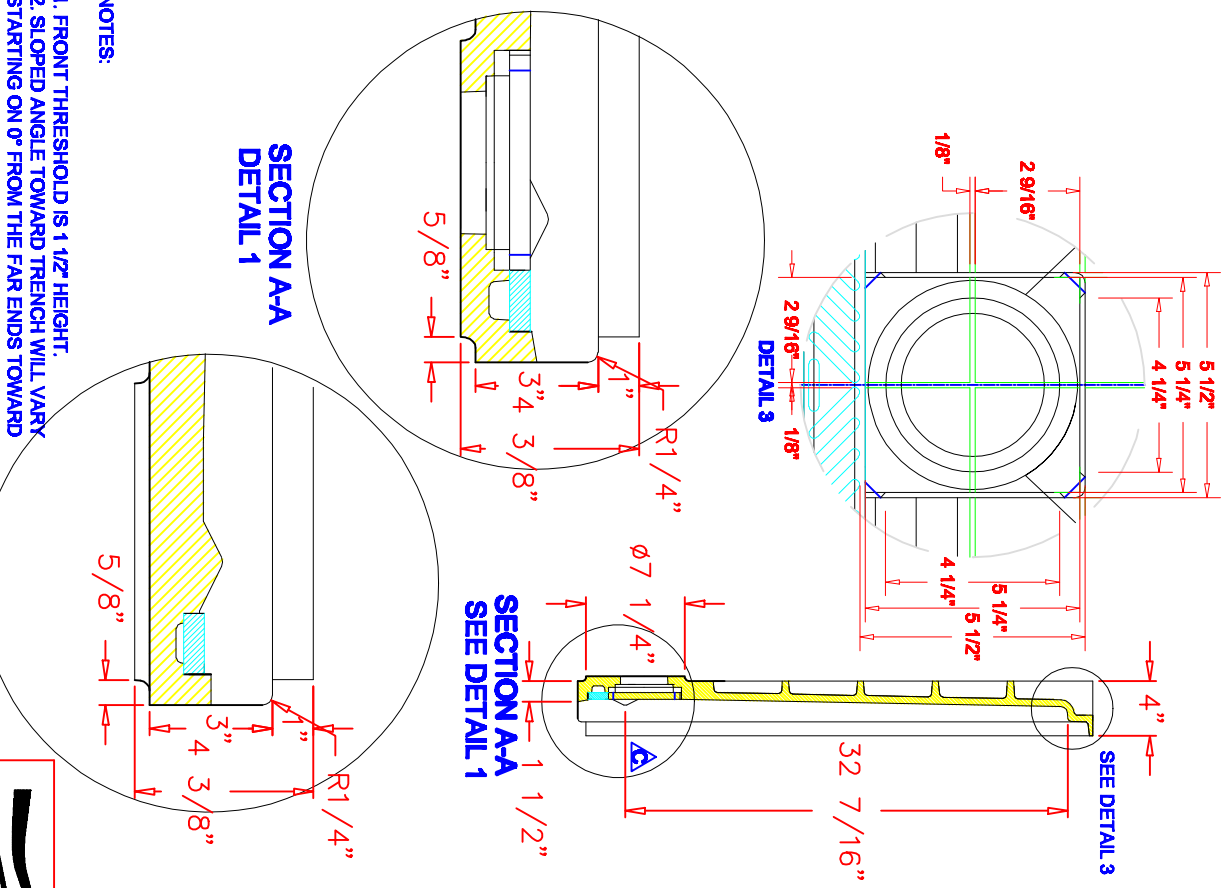


Rev #	A	09/24/09	Distance between reinforcement ribs changed from 10" to 9"
Rev #	B	04/01/09	Drain hole and trench updated. One slitting hole per side added.
Rev #	C	04/01/09	Radius of 1/4" added to water retainer. 2:1 Slope toward drain on side threshold
Rev #	D	11/29/09	Front threshold detail updated according to U.S. elections.



- NOTES:
1. FRONT THRESHOLD IS 1 1/2" HEIGHT.
 2. SLOPED ANGLE TOWARD TRENCH WILL VARY STARTING ON 0" FROM THE FAR ENDS TOWARD DRAIN. COMPARE SECTIONS A-A AND B-B.
 3. TRENCH DEPTH WILL VARY STARTING ON ±1/4" FROM THE FAR ENDS TO 5/8" ON CENTER OF THE PAN. SEE SECTIONS A-A AND B-B TO COMPARE.

Customer Approval: _____ Date: _____
 Part#: _____

400 Dietz Road
 Warren, OH 44482
 330-393-6624
 FAX 330-399-4426
 www.transolid.com

Part Number:	FG3938		
Description:	Pan, ADA Roll In, 37-3/4" x 39-1/2", Trench Drain, w/ Cover		
Date Drawn:	09/28/13	Weight:	
Drawn By:	Daniel Hoffland	Scale:	None
Approved By:		Revised By:	
		Date Revised:	