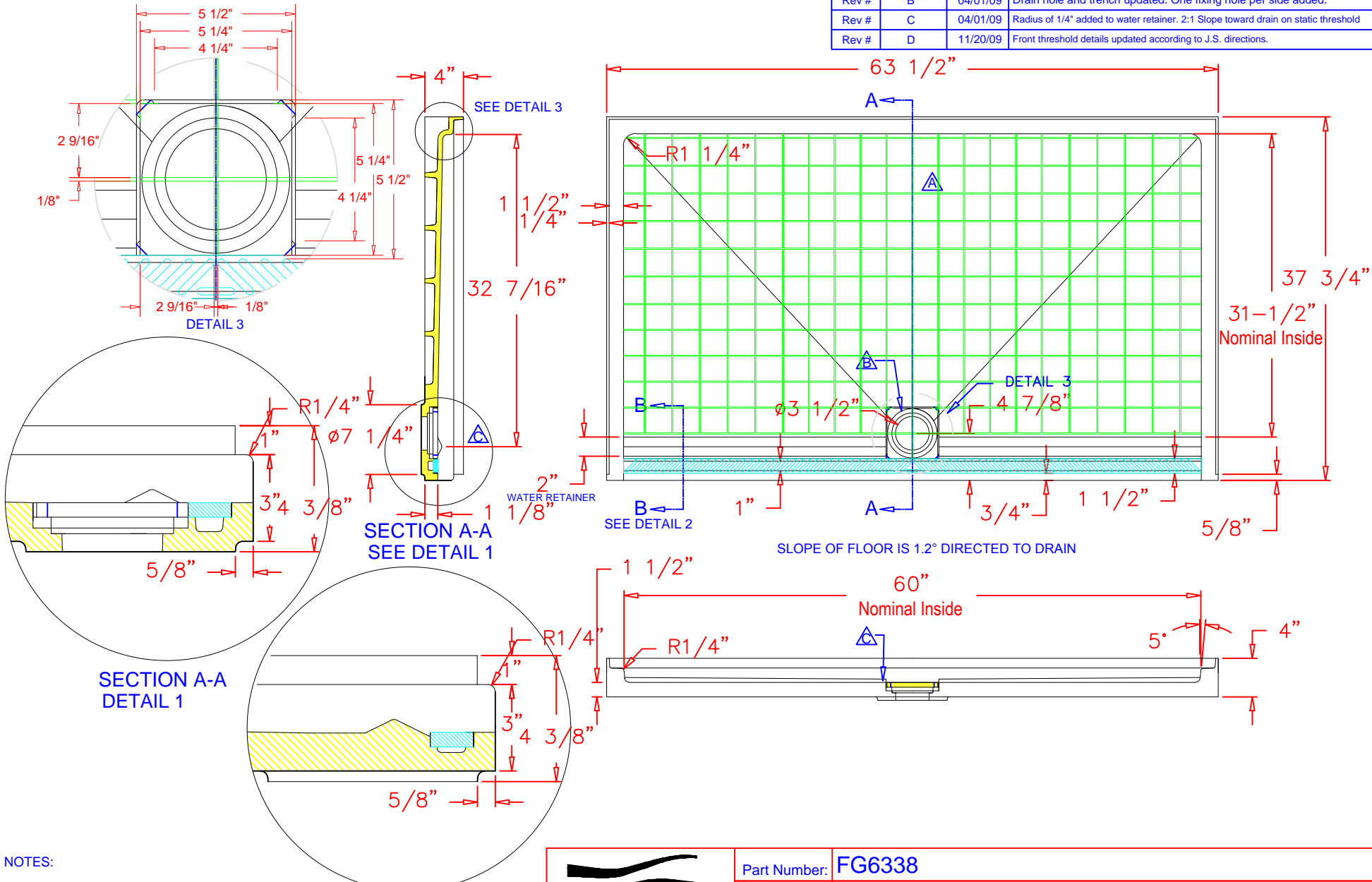


Rev #	A	03/24/09	Distance between reinforcement ribs changed from 10" to 8"
Rev #	B	04/01/09	Drain hole and trench updated. One fixing hole per side added.
Rev #	C	04/01/09	Radius of 1/4" added to water retainer. 2:1 Slope toward drain on static threshold
Rev #	D	11/20/09	Front threshold details updated according to J.S. directions.



**NOTES:**

- FRONT THRESHOLD IS 1 1/8" HEIGHT.
- TRENCH DEPTH WILL VARY STARTING ON ±1/4" FROM THE FAR ENDS TO 5/8" ON CENTER OF THE PAN. SEE SECTIONS A-A AND B-B TO COMPARE.

**SECTION A-A DETAIL 2**

Customer Approval: \_\_\_\_\_ Date: \_\_\_\_\_  
 Path: @Engineering\

400 Dietz Road  
 Warren, OH 44482  
 330-393-6624  
 FAX 330-399-4426  
 www.transolid.com

Part Number:	FG6338		
Description:	Pan, ADA Roll In, 37-3/4" x 63-1/2", Trench Drain, w/ Cover		
Date Drawn:	03/26/13	Weight:	Scale: None
Drawn By:	Carlos Hernandez	Revised By:	
Approved By:		Date Revised:	